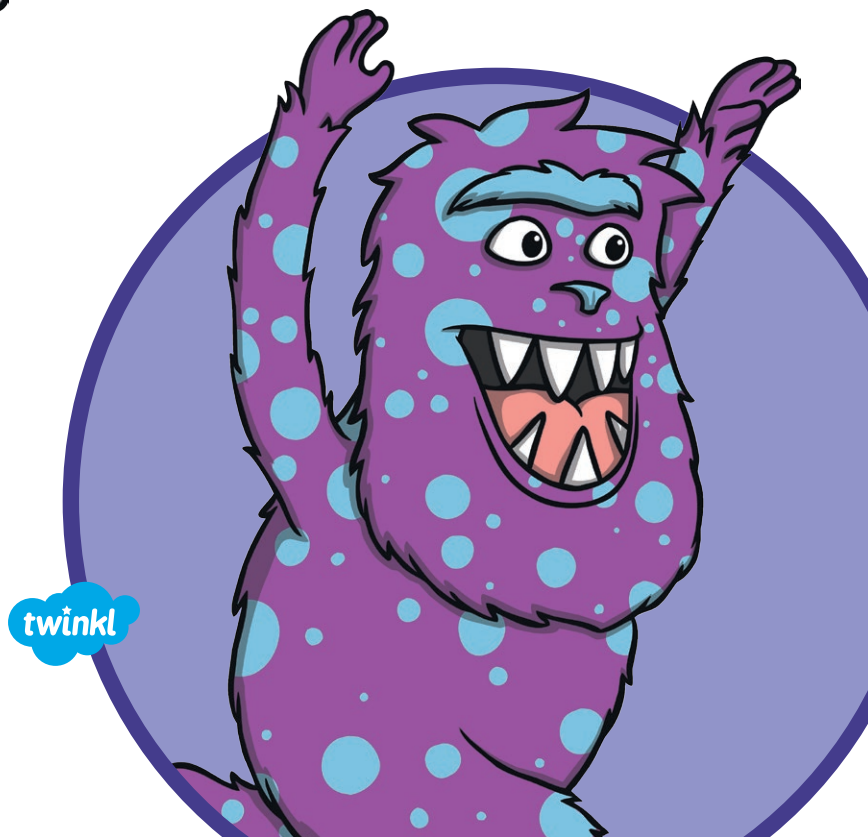
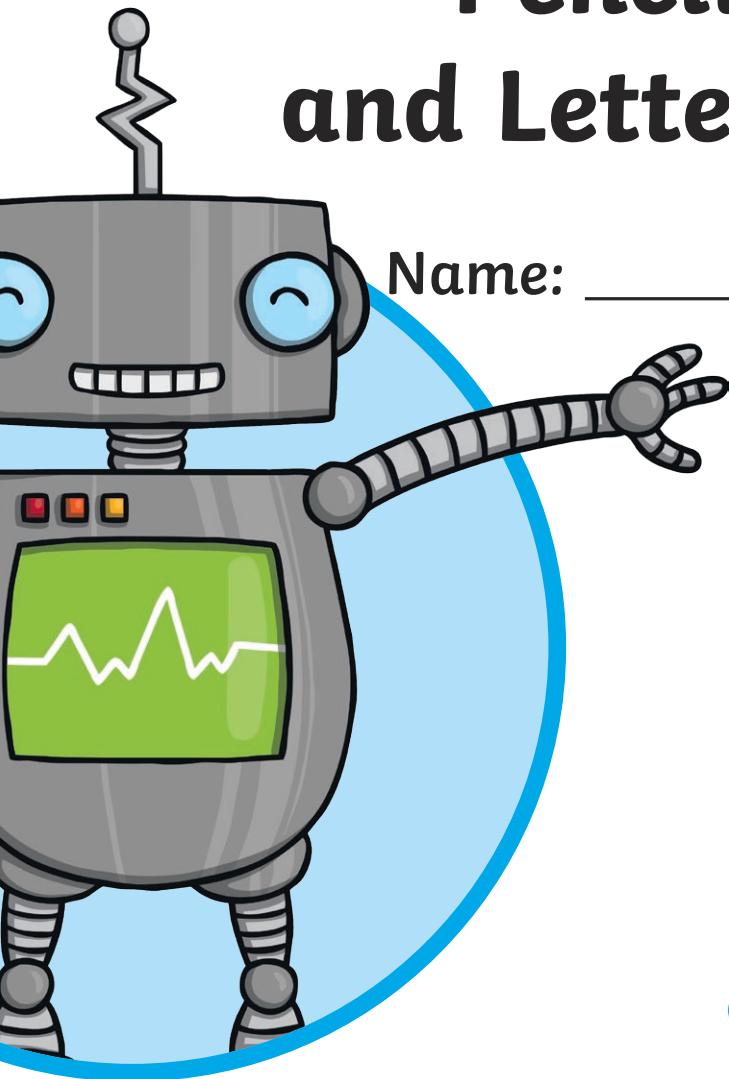


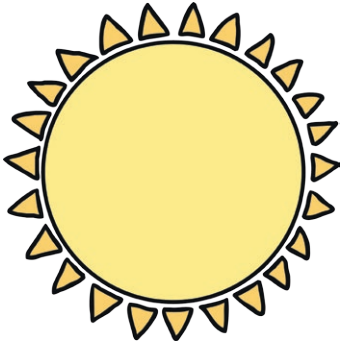
SATPIN

Pencil Control and Letter Formation

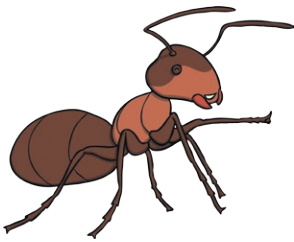
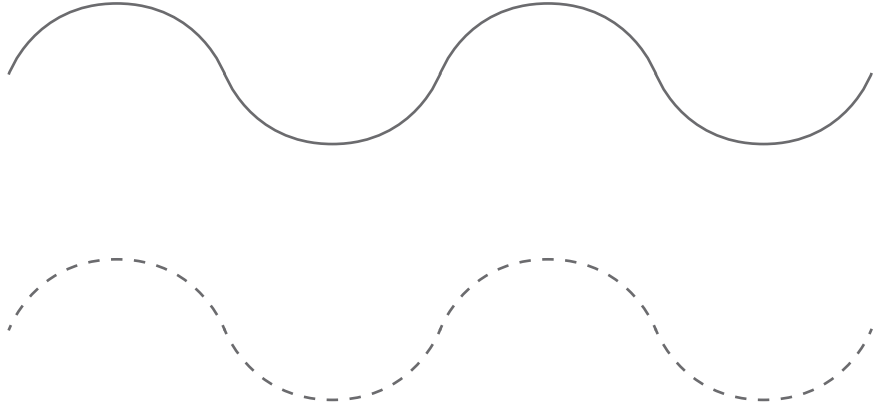
Name: _____



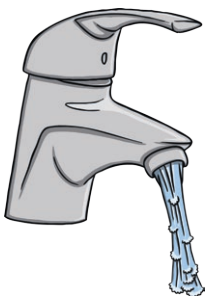
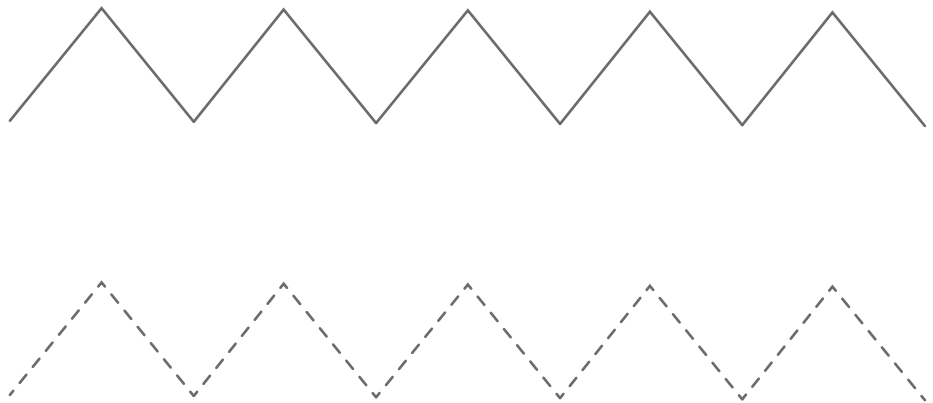
Use your pencil to trace the lines from left to right.



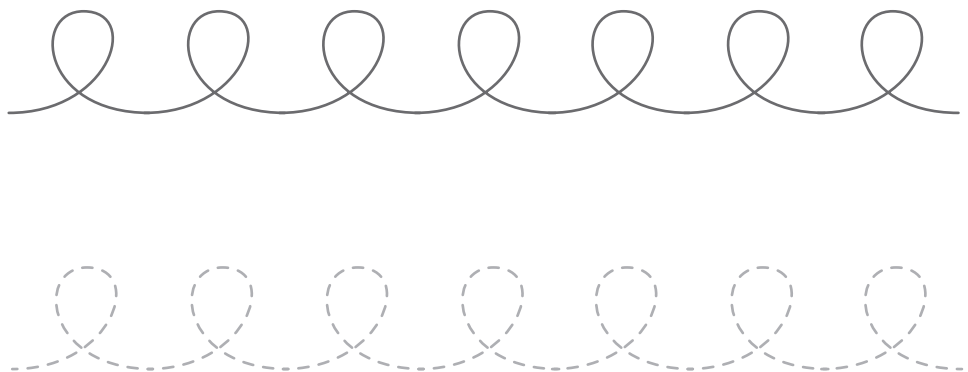
s



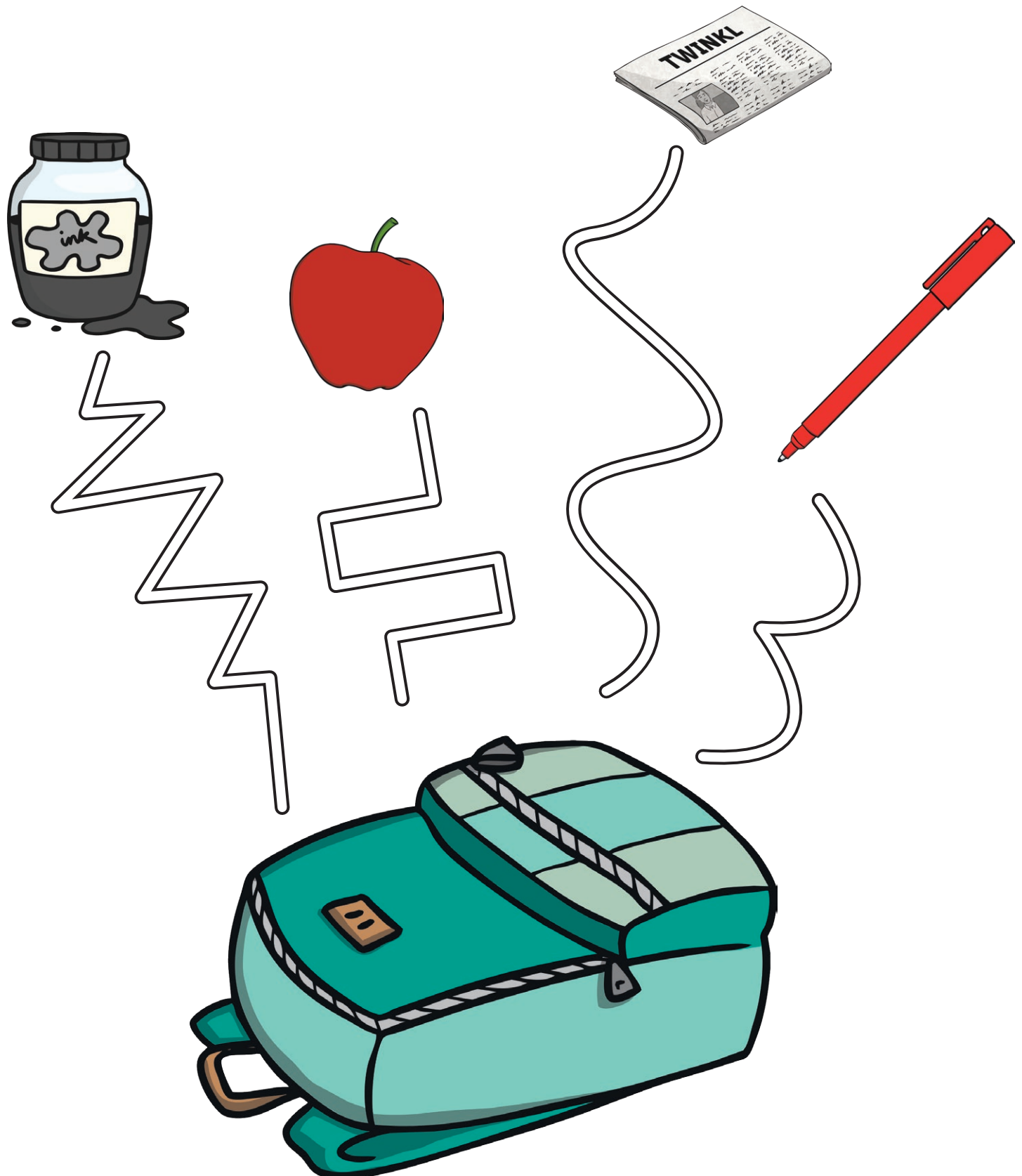
a



t



Use your pencil to draw a line and add each item into the backpack. Try to stay in the middle of each path. What sound does each item start with?



Form each letter correctly on the handwriting lines.



s

is for sat.



s

is for sit.

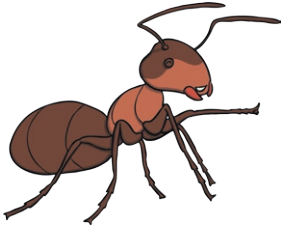


s

is for sip.



is for sock.



a

is for ant.



a

is for act.

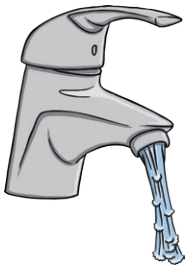


a

is for antlers.



is for add.



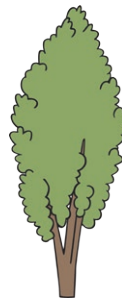
t

is tap.



t

is for tin.



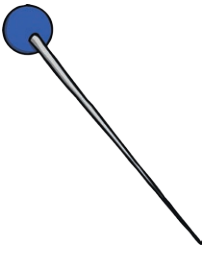
t

is for tree.



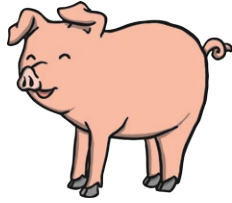
is for tock.

Form each letter correctly on the handwriting lines.



p

is for pin.



p

is for pig.



p

is for pat.

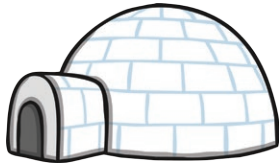


is for pan.



i

is for ink.



i

is for igloo.

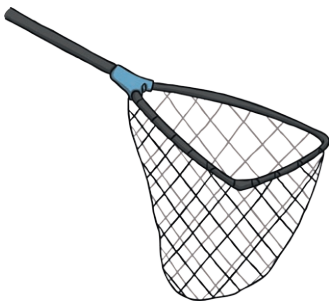


i

is for insect.



is for imp.



n

is for net.



n

is for nap.



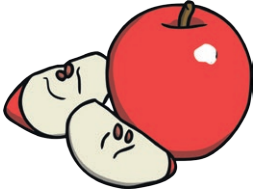
n

is for nib.



is for nan.

Trace and copy each word quickly and neatly.



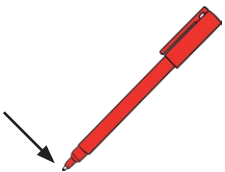
pip



sip



pin



tip



pit

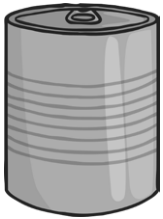
Write the missing words on the handwriting lines as neatly as possible.



I _ _ _ with my dog.



The _ _ _ is hot.



The beans are in a _ _ _.



The _ _ _ is dripping.



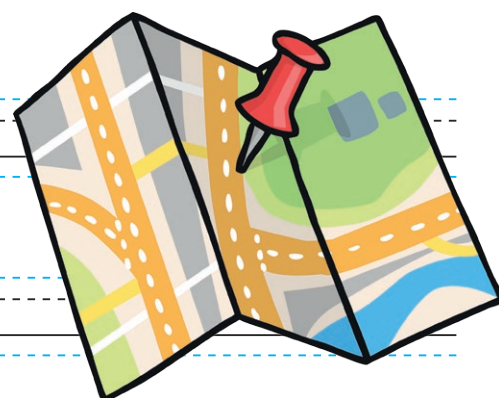
The cat took a _ _ _.

Trace and copy these captions as neatly as possible.

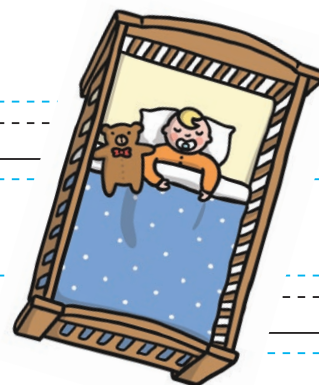
pat a dog



a pin in the map



a nap in a cot



a sad man

